

# GAILSBURG V



Gailsburg V - A • 3,851 sq. ft.



Gailsburg V - B • 3,908 sq. ft.



Gailsburg V - C • 3,950 sq. ft.



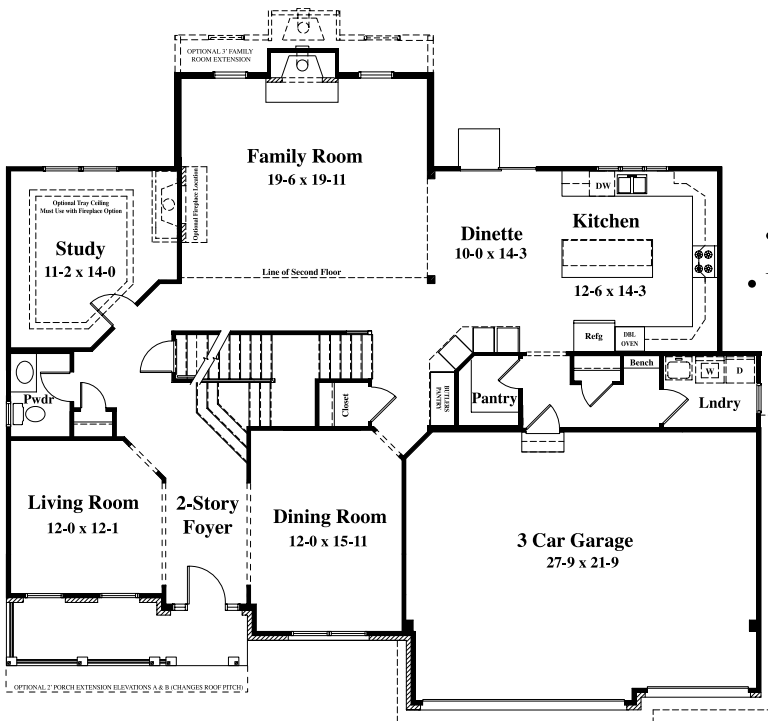
Gailsburg V - D • 3,903 sq. ft.



Gailsburg V - E • 3,859 sq. ft.



Gailsburg V - F • 3,902 sq. ft.

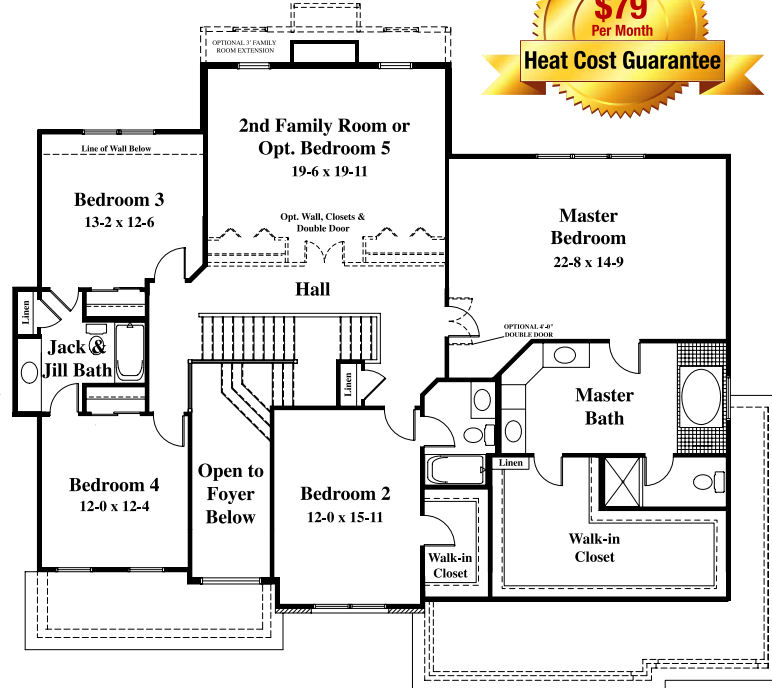


## 1st Floor Features

- 2-Story Foyer • 3 1/2 Baths
- Family Room with Fireplace
- 3-Car Garage • Study • Living & Dining Rooms
- U-Shaped Kitchen with Island and Adjacent Dinette
- Butlers Pantry • Spacious Walk-in Pantry
- Laundry Room

## 2nd Floor Features

- 4 Bedrooms • Media Room • Spacious Master Bedroom
- Master Bath includes His/Hers Vanities, Separate Shower, Soaking Tub, Private Water Closet and Walk-in Closet
- Jack & Jill Hall Bath
- Private Bath and Walk-in Closet in Bedroom 2



Due to our continuing efforts to improve our home plans and provide our customers with greater value the plans, specifications and dimensions shown on this brochure may vary and are subject to change without notice. All customers should refer to their actual plans, specifications and contract for detailed and final information. This brochure is intended for informational purposes only. All square feet and room dimensions shown are approximate. 4-2012